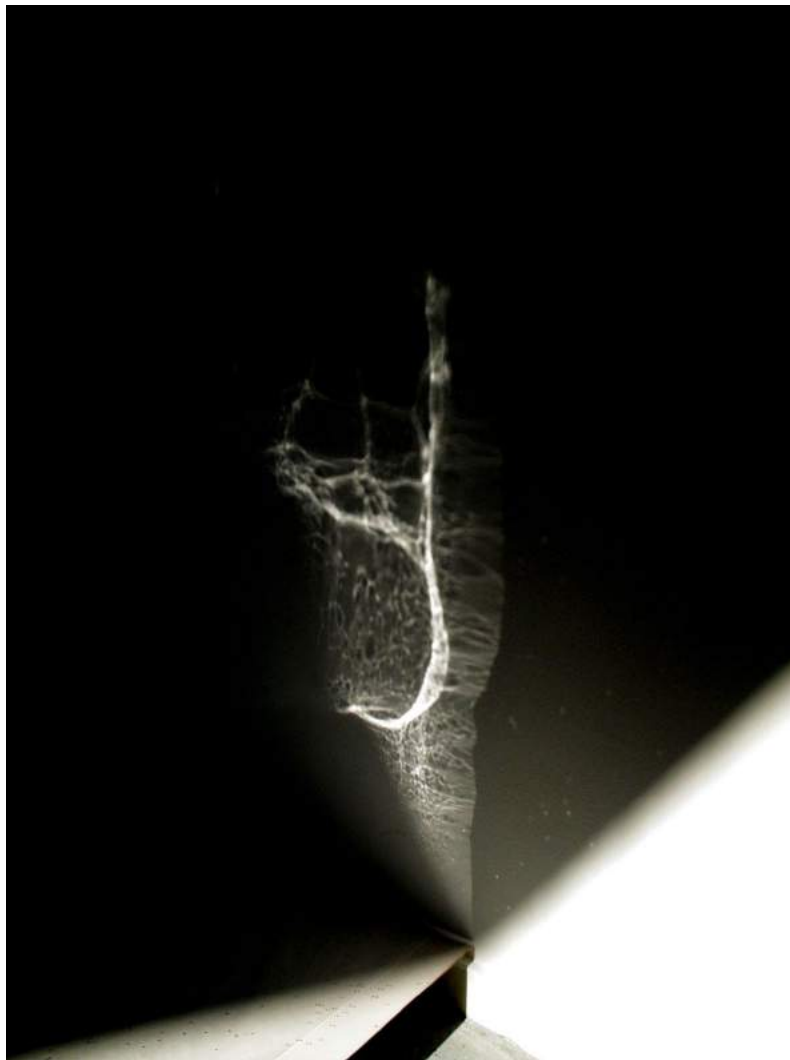


under
construction
gallery

Emmanuelle BOUYER



under construction gallery

As an architect, Emmanuelle Bouyer tirelessly develops research into appearing and disappearing. The work presented here traces more precisely what she calls "disappearance", this deficiency, that lack, inexorably dug out by "what is withdrawn", whether it be light, water... The works produced from this quest take multiple forms as performance, drawing, installation, or video.

Born in 1965, works and lives in Paris.

ARTISTIC INTERVENTIONS - EXHIBITIONS

2017

- Chasse de lumière - group performance - Hall de l'ENSA - Paris

2016

- *Christmas #2 La femme à la bûche* - group exhibition - under construction gallery - Paris
- *Dédoublement(s)* - group show - under construction gallery - Paris
- *La peau que j'habite* - with Armelle Caron - Centre Camille Lambert - Juvisy-sur-Orge (91)
- *Lignes de lumière* - performance during ART PARIS ART FAIR - Paris

2015

- *Lignes de lumière* - performance during Slick contemporary art fair - Paris
- *Noli me tangere* - in collaboration with André Avril - PARIS TEXAS Antwerp - Anvers
- *Noli me tangere* - in collaboration with André Avril - Loligo - Morangis (91)
- *Confidentiel Yia Art Fair* - Bastille Design Center - Paris

2014

- *Plan 1* - group show - under construction gallery - Paris
- *Ligne de lumière - scanner asynchrone* - performance at Église Notre Dame des Champs du Musée des Arts et Métiers - Yia Art Fair #04 - Le Carreau du Temple - Paris

2013

- *Il y a des forces de gravité dans le mouvement de la lumière* - video installation in collaboration with André Avril - Loligo - Morangis (91)
- *Lumière emprunte* - with Guy Trier - The film Gallery - Paris

2012

- *Effeillage, "le mur : lieux et enjeux - Espace de l'habité"* - L'art dans les loges - Parcours d'art contemporain dans les loges de gardiens - Cité de la Grande Borne - Grigny (91)

2009

- *Murs-murs, "Lieux dits"* - L'art dans les loges - Parcours d'art contemporain dans les loges de gardiens - Cité de la Grande Borne - Grigny (91)
- *Habitacle 1* - group show : "artistes pluriels, école singulière" - École Nationale supérieure d'Architecture de Paris Val de Seine - Paris

2008

- Intervention in the church of Amponville - *Croisée des chemins* - contemporary art proposition - association Arts Contemporains-lieux sacrés - Amponville (77)
- *Ricochets* - art direction of the Thursday's Evening (circus) - Centre Georges Pompidou - Paris

2005

- *Le regard du circassien* - art direction of the Thursday's Evening (circus) - Centre Georges Pompidou - Paris
- Video pour "journée type" - setting track Phillipe Fenwick - Ecole Nationale des Arts du Cirque de Rosny sous Bois (93)

2004

- Opening scenography for the new marquee of l'Ecole Nationale des Arts du Cirque de Rosny sous Bois (93)
- *De la tête aux pieds* - collective exhibition - Centre culturel Aragon - Oyonnax (01)

under construction gallery

2002

- *Traces de musiques* - drawings and video - exhibition at Elisabeth de Senneville - Paris
- Interventions on stage with the musical ensemble ARTEDIE - Auditorium Saint Germain des Prés - Paris

1993

- Getting space and light of a musical creation for a post-industrial site Volklingen - with the music composer Megumi Tanabe - Festival de Saarbrücken (Germany)

1992

- Getting space and light of a musical creation - with the music composer Megumi Tanabe - Provins

VIDEOGRAPHY

2012 *Ether* - published by the artist

2011 *Out of water* - published by the artist

2009 *L'art dans les loges, Lieux dits* - a film by Milena Donato - DRAC île de France

2004 *AZ* - Ecole nationale des arts du cirque de Rosny sous Bois

2002 *Résonnances* - Horia Ratiu's music - published by the artist

under
construction
gallery

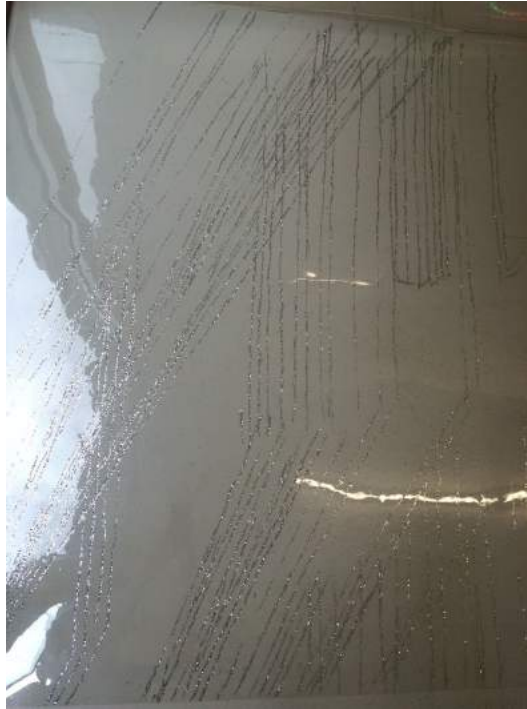
Ectoplasmes lumineux - 2017

impression jet d'encre sur rhodoïde, colle, verre - 20x20 cm



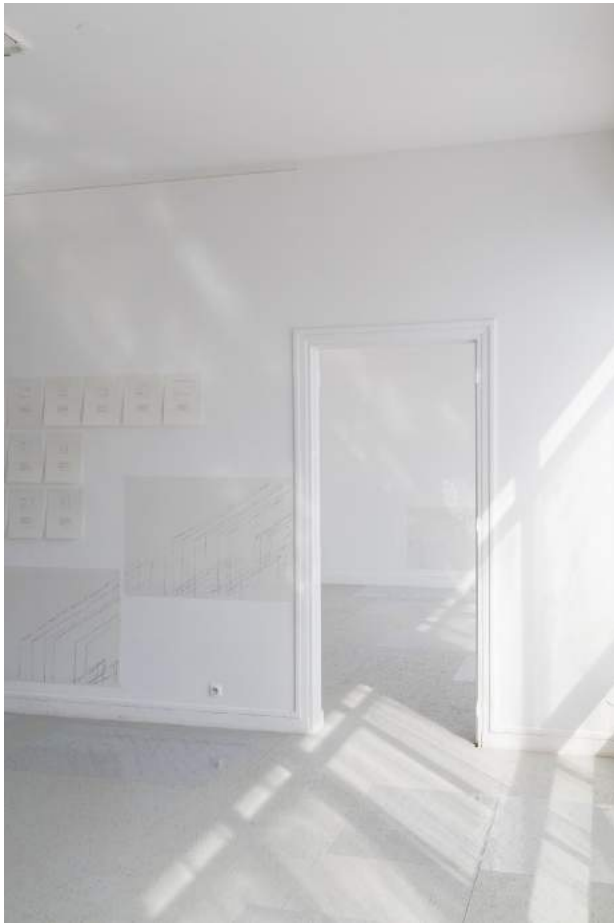
under construction gallery

« *Dédoublement(s)* » - exhibition views - under construction gallery - Paris - 2016



under construction gallery

exhibition views - *La peau que j'habite* - with Armelle Caron - Centre Camille Lambert - Juvisy-sur-Orge (91)
©Laurent Harduin

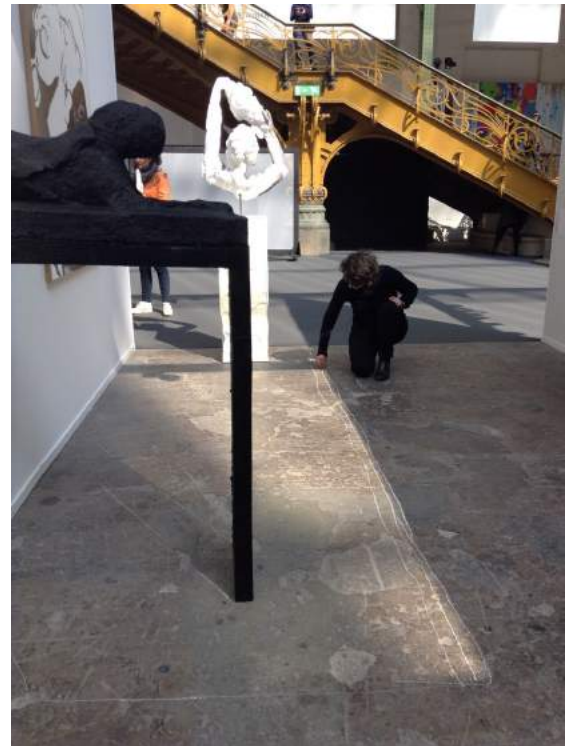


under construction gallery

Lignes de lumière - performances

The uncertain state of the place is a matter in which the artist likes to settle. Walk to seize a territory, follow the lines that form the light. Draw what constantly moves, moment after moment, like an endless race, except that caused by the limit of a window or the passage of a cloud.

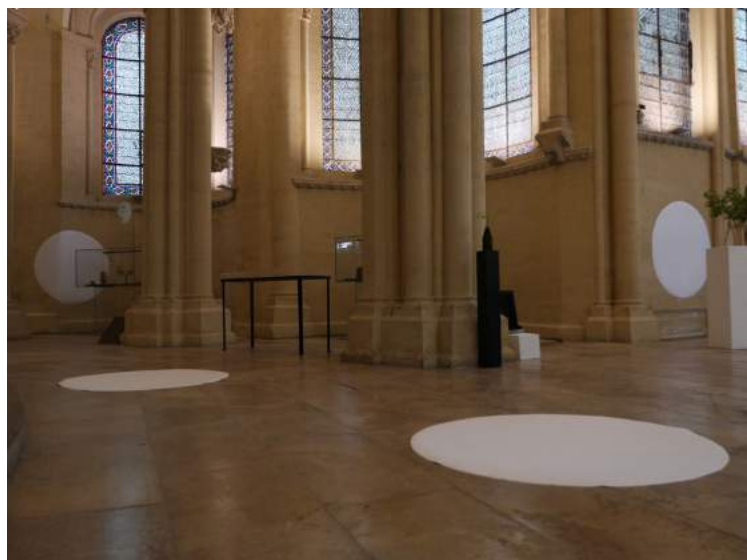
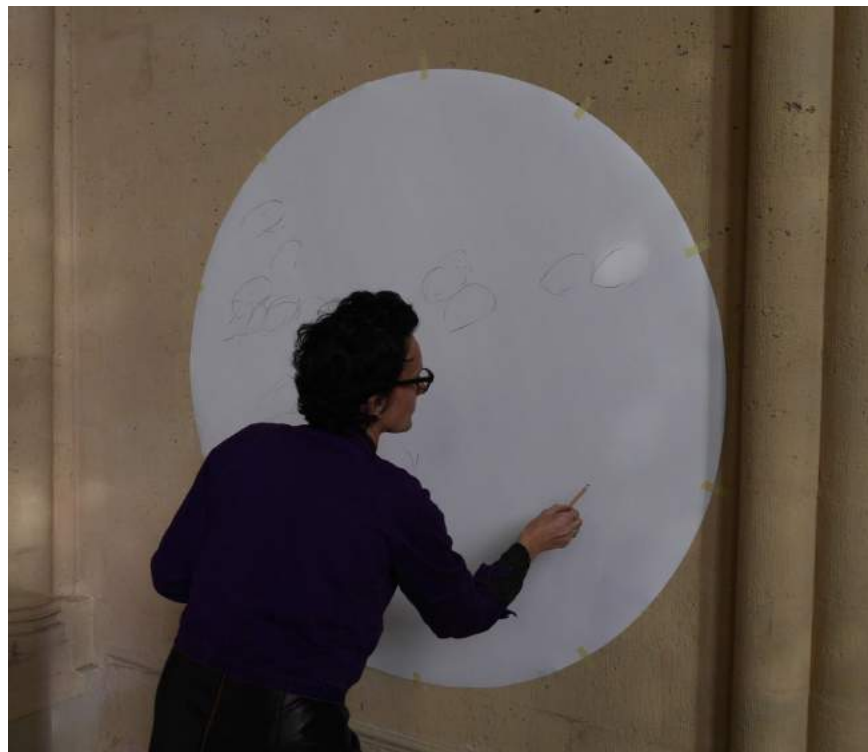
Lignes de lumière - march 2016
performance in the Grand Palais
during ART PARIS ART FAIR 2016



Lignes de lumière - october 2015

performance realized on the opening day of SLICK
contemporary art fair 2015

under
construction
gallery



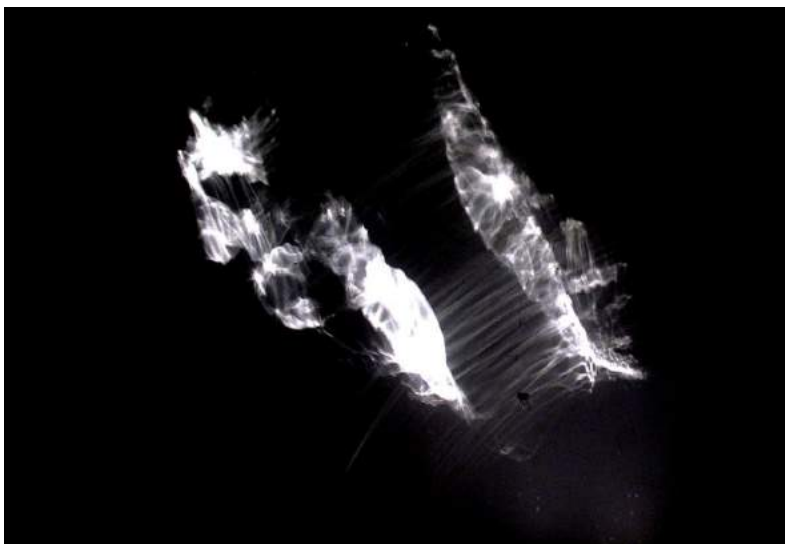
Lignes de lumière - scanner asynchrone - performance during the "hors les murs" program by YIA et Marais culture + in l'Église Notre Dame des Champs du Musée des Arts et Métiers - october 2014

During this intervention Emmanuelle Bouyer captured the lines formed by the light entering and moving in space and thanks to the drawing, she made a record of what keeps moving, instant after moment. The traces of this race linking her to the

6 passage des Gravilliers - 75003 PARIS - tél + 9 83 73 34 64 - du mardi au samedi de 14h à 19h
www.underconstructiongallery.com - underconstructiongallery@gmail.com

under construction gallery

permanent shift produced by the rotation of the earth on itself she wished to intervene in the Church of Saint-Martin-des-Champs around the pendulum of Foucault, emblematic instrument of capturing this phenomenon.



Ectoplasme lumineux - 2013
Inkjet print on rodhoïd- 21 x 29,7 cm

Light ectoplasm are ephemeral and unstable appearances directly from the sun sparkling on light lines. The photographs are a fragment. Thus, this work of plunging into a flux of light, attempting to grasp the movement in a sequence of fixed traces, is

under construction gallery

transformed into a ricochet device returning to the initial flow, that of passing time.



Lignes de lumière - 2011

glitter and glue on rodhoïd - wall : 210 x 200 cm - floor : 210 x 500 cm

The uncertain state of locations is a matter in which the artist likes to install. Walking to seize territory, follow the lines that form the light. Draw what keeps moving, moment by moment, as an endless race, except that caused by the edge of a window or the passage of a cloud. The traces of this race deposited in glitter refers to the fragility of these fleeting moments.

under
construction
gallery



Tee-shirt apparitions - 2010

gouache and acrylic on Cristal paper- 70 x 100 cm

In these t-shirts, there is a report on transfer, to borrowing, deposit and lure. Something that is there but has no body. Much like the body of dead spiders bleached. As if the crystal foil paper was indicative of a presence, past or future.

under construction gallery



Installation at l'Église d'Amponville (Seine et Marne) - Croisée des chemins - août 2008

The initial intentions of the project were to work with the specificity of the place, an interior, a slightly greenish-colored cavity in the middle of the plain of Amponville, marked by the horizontale of fields without limit whose light is crushing, almost overexposed . The installation tries to amplify this contrast, while allowing a walk inside the church. A cross path of red light on the side wall, accompanies the visitor's wandering to the choir of the church, allowing him to discover a smaller, static space marked by verticality. The stable light of the bulb makes it possible to establish a contrast with the movements of the sun on the walls. It is again a link with the external light, the celestial mechanics devoid of the relation to the landscape. A look at the passing time, a moment of presence, of contemplation.